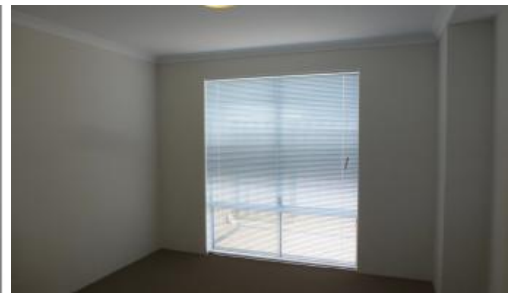


Leased



5 Melksham Way, Butler



****4x2 GREAT LOCATION, GREAT FAMILY HOME**...**

Near new spacious four bedroom two bathroom home features theatre room and separate living/dining area, modern kitchen with stainless steel appliances, activity room, air con to main bedroom and living area, built in robes to all bedrooms, alarm system, double garage, paved alfresco area and great size yard with easy care gardens all reticulated.

DIRECTIONS:

Travel north on Connolly Drive,
Left onto Benenden Avenue,
Right onto Camborne Parkway
Left onto Hollington Boulevard
Left onto Mansfield,
Left onto Melksham

Home Open 24 February 2015 at 4.10pm

The above information provided has been furnished to us by the vendor/s. We have not verified whether or not that information is accurate and do not have any belief in one way or the other in its accuracy. We do not accept any responsibility to any person for its accuracy and do no more than pass it on. All interested parties should make and rely upon their own inquiries in order to determine whether or not this information is in fact accurate.

 4  2  2

Price	\$395 per week
Property Type	Rental
Property ID	569

Agent Details

Debra Toperesu - 08 9206 1600

Office Details

Wanneroo
945 Wanneroo Rd Wanneroo WA 6065
Australia
08 9206 1600

