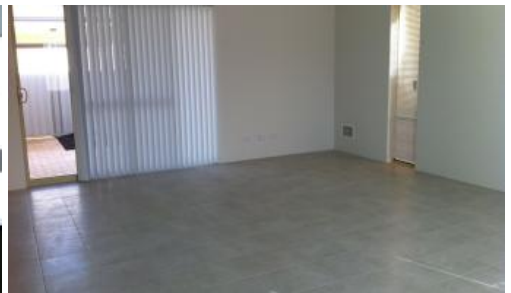
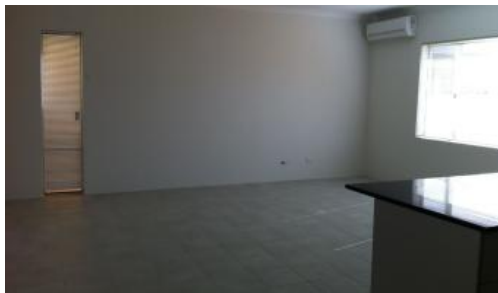




18 Portaferry Gardens, Ridgewood



HOME OPEN SATURDAY 23RD AUGUST AT 12:50-1.00PM

4X2, great location close to parks, open plan kitchen dining and family, kitchen has stainless steel appliances, double remote control garage, split system air-con, quite location, low maintenance gardens, built in robes to all bedrooms.

PLEASE CONTACT STORM FOR A VIEWING, storm@urbanwa.com.au

The 2013-14 household income eligibility limits

The 2013-14 household income eligibility limits are:

2013-14 Year \$

1st Adult 45,956

Each Additional Adult 17,579

First Sole Parent 48,336

Each Child 15,243

For ease of application purposes, a variety of 2013-14 income eligibility limits for various household compositions are presented below.

Household composition Initial household income limit (\$) Existing tenant income limit (\$)*

One adult 45,956 57,445

Two adults 63,535 79,419

Three adults 81,114 101,393

Four adults 98,693 123,366

Sole parent with one child 63,579 79,474

Sole parent with two children 78,822 98,528

Sole parent with three children 94,065 117,581

Couple with one child 78,778 98,473

Couple with two children 94,021 117,526

4 2 2

Price	\$336 per week
Property Type	Rental
Property ID	94

Agent Details

Robyn Horsman - 08 9206 1600

Office Details

Wanneroo

945 Wanneroo Rd Wanneroo WA 6065

Australia

08 9206 1600



Couple with three children 109,264 136,580

*If the household income of an existing tenant exceeds the indicated limit (25 per cent greater than the initial income limit) in two consecutive NRAS years, the tenant will cease to be an eligible tenant. This column indicates figures which are 25 per cent higher than the household income limits for ease of reference for this purpose.

The above information provided has been furnished to us by the vendor/s. We have not verified whether or not that information is accurate and do not have any belief in one way or the other in its accuracy. We do not accept any responsibility to any person for its accuracy and do no more than pass it on. All interested parties should make and rely upon their own inquiries in order to determine whether or not this information is in fact accurate.